

WEIPU® 2024



 **WEIPU® Connector**  
*Smart Connection Provider*

**WATERPROOF  
CONNECTOR**

[www.weipuconnector.com](http://www.weipuconnector.com)

Robust  
**Business  
PERFORMANCE**



With nearly 30 years of experience, WEIPU provides comprehensive connector products and services, developing connecting solutions adapted to international markets and customers.



**100+**  
Overseas Distributors



**100 Countries+**  
Weipu products served



**150+**  
Product Series



**30000 m<sup>2</sup>**  
Factory Land



**600+**  
Employees



**80,000+/Day**  
Production Capacity



**\$73M+**  
Annual revenue 2023



**27+**  
Years of Experience

## SOLID EXPERIENCE

### PRODUCT RANGE AND AREA

- **Circular Connector**
- **Heavy-Duty Connector (Rectangle)**
- **CEE Connector**
- **Distribution Box**
- **Cable Gland and accessories**
- **Custom Cable Assembly**
- **Custom PCB Contact**

*WEIPU product range now includes more than 10,000 different products.*

### CERTIFICATION



# Our Milestone



WEIPU Factory  
Guangdong, China



**WEIPU**

Designed and launched waterproof function circular connectors — SP, SF, ST, and SA series.

**1996**

**WEIPU**

Started to develop and manufacture industrial connectors

**WEIPU**

Launched circular connector WS series and CEE connectors.

**2005**

**WEIPU**

Started to develop overseas business

**2006**

**WEIPU**

Had the first overseas distributor

**2012**

**WEIPU**

Started to offer custom cable assembly service

**2018**

**WEIPU**

Moved factory to a new location and expand the factory land up to 30000 m<sup>2</sup>



**WEIPU**

Upgraded CEE connectors

**WEIPU**

Launched Heavy Duty connector (Rectangle)

**2021**

**WEIPU**

Had over 10,000 products on offer

**2022**

**WEIPU**

Launched Cable Gland Family



CNC Machining Center



Testing Room

# Factory at a Glance



**Injection**



**Die Casting**



**CNC Machining**



**Self-owned Molds**



**Copper Processing**



**Aluminium Processing**



# TRUSTED BY

*Today, WEIPU products are served in more than 100 countries where there are many successful cases and projects.*



# Signature Products

## ▶ Threaded Connectors

### SP Series

- Plastic
- IP68
- Size 11-29
- 1-35pins



### WS/WF Series

- Zinc Alloy
- Size 16-55
- 1-61pins



## ▶ Push-pull Connectors

### SA Series

- Aluminium
- Size 6-28
- 1-35pins
- Multi-colored



### SF Series

- Brass
- Size 6-20
- 1-15pins



## ▶ Bayonet Connectors

### SY Series

- Plastic
- Size 11-29
- 1-35pins



### WY Series

- Zinc Alloy
- Size 12-55
- 1-61pins



## ▶ Data Connectors

### SA24 Dats Series

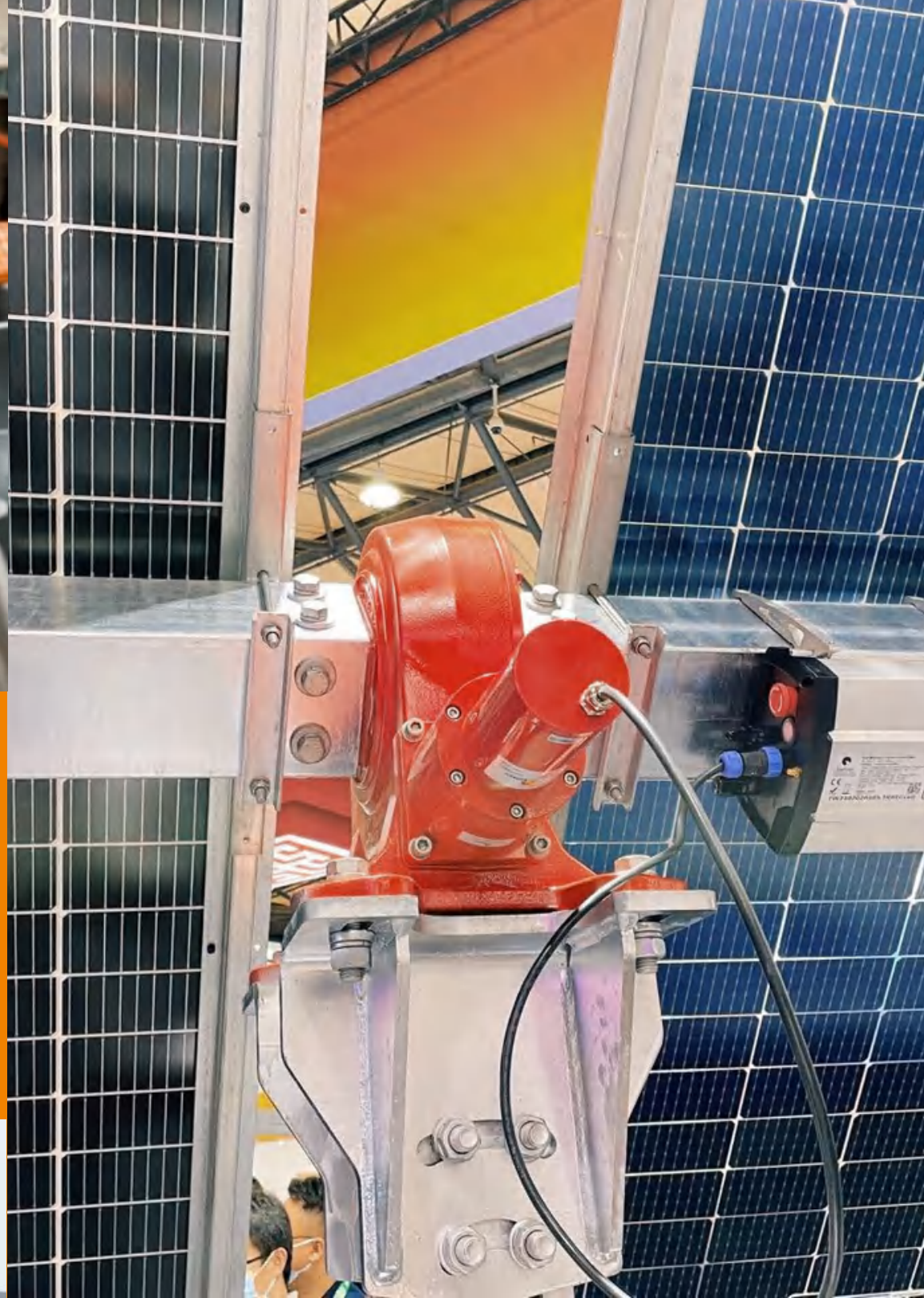
- Metal
- LC/USB3.0/ RJ45/HDMI2.0



# Meet Our Projects



***WEIPU Projects-  
Battery related***



***WEIPU Project-  
Solar tracker control box***



***WEIPU Projects-  
LED & Lighting***





***WEIPU Projects-  
CCTV Camera***



***WEIPU Projects-  
Test & Measurement***



***WEIPU Projects-  
Robotics***



## SUCCESSFUL CASE

- Spain/ Brazil/ Portugal/USA/Canada Solar Energy Projects
- USA/ Germany/ UK/ India/ New Zealand Battery Box Projects
- Brazil/Nederland/Germany/India/China Metro/Railway Projects
- FAW Volkswagen, Shanghai GM, GAC Automobile projects
- Beijing Olympic Stadium (Bird's Nest) project
- Guangzhou Asian Games project
- Shanghai Hongqiao Airport Terminal project
- 60th and 70th Anniversary National Day Tiananmen Square Celebration lighting project
- 2010 Shanghai World Expo Opening Ceremony lighting project

### **WEIPU Olympic Stadium (Bird's Nest) project**

WEIPU CEE connectors have been applied in the Beijing National Stadium since the 2008 Summer Olympics.

## EXHIBITION SHOWS WE ATTEND



# Why Choose Us?



## Management

- Over 25 Years
- Thousands of Cases/Projects
- Quality & Control



## R&D Capability

- NEW Product Development
- Customization  
(PCB, Color, Size, Shielding, etc.)



## Service

- Professional Sales Team
- After-Sales (Q&C)
- Timely Response
- Customization service



## Product

- High Quality
- Competitive Cost
- Wide Range



## Cable Assembly & Molding

With UL-approved cable harness, Weipu is committed to providing reliable customized assembled cable solution.

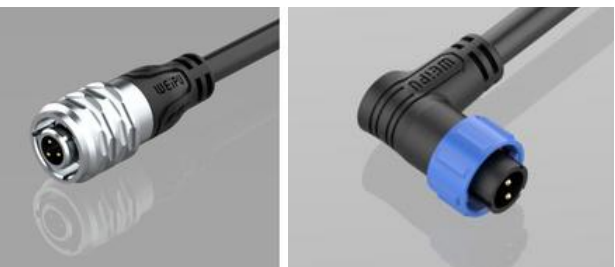
- *Cable Assembly:*  
All series available
- *Cable Overmolding:*  
SF/SA/SP/SY series available



## PCB Pin

PCB pin can be customized with the size of the PCB pin diameter from  $\Phi$  0.6 to  $\Phi$  3.

- *SF/SA/SP/SY/WS/WF/WY/WP series are available.*



## Multiple-hole entry

This solution gives *cost savings* and *space savings*. It answers the need when several cables need to be terminated into one single cord grip.



## Custom Color

We offer custom shell color services to meet the demand for different color solutions from industries.

## Shielding Circle

To meet the rising need of different industries for shielding functions, WEIPU offers a custom shielding circle with a grounding arrangement.

## Potting sealing

- Provide additional strain relief for cables and contacts.
- Seal the rear of the connector against moisture and dust.
- Offer strong shock resistance, impact resistance, and deformation resistance.





**-Your connection provider-**

[www.weipuconnector.com](http://www.weipuconnector.com)